



Lafayette Regional Xpressway

Tier 1 EIS

Agency Meeting

January 12, 2016

AGENDA

- Why a project?
- Proposed project
- Where were we?
- What are we doing now?
- Environmental resource updates
- Tier 1 EIS Next Steps
- Future Tier 2 EIS Steps
- Questions, Comments, Feedback

WHY A PROJECT?

- Since 1950s numerous studies with focus on a loop or beltway connecting areas north and south of Lafayette have been conducted
- 2003 LA Legislature authorized creation of the LMEC
 - Promoting, planning, financing, developing, constructing, controlling, regulating, operating and maintaining limited-access tollways or transit ways within its jurisdiction
 - Innovative and alternative funding sources that would be used to improve transportation system
- Louisiana Statewide Transportation Plan (Draft)
 - Lafayette Loop is listed as a Priority C project (unfunded priority list)

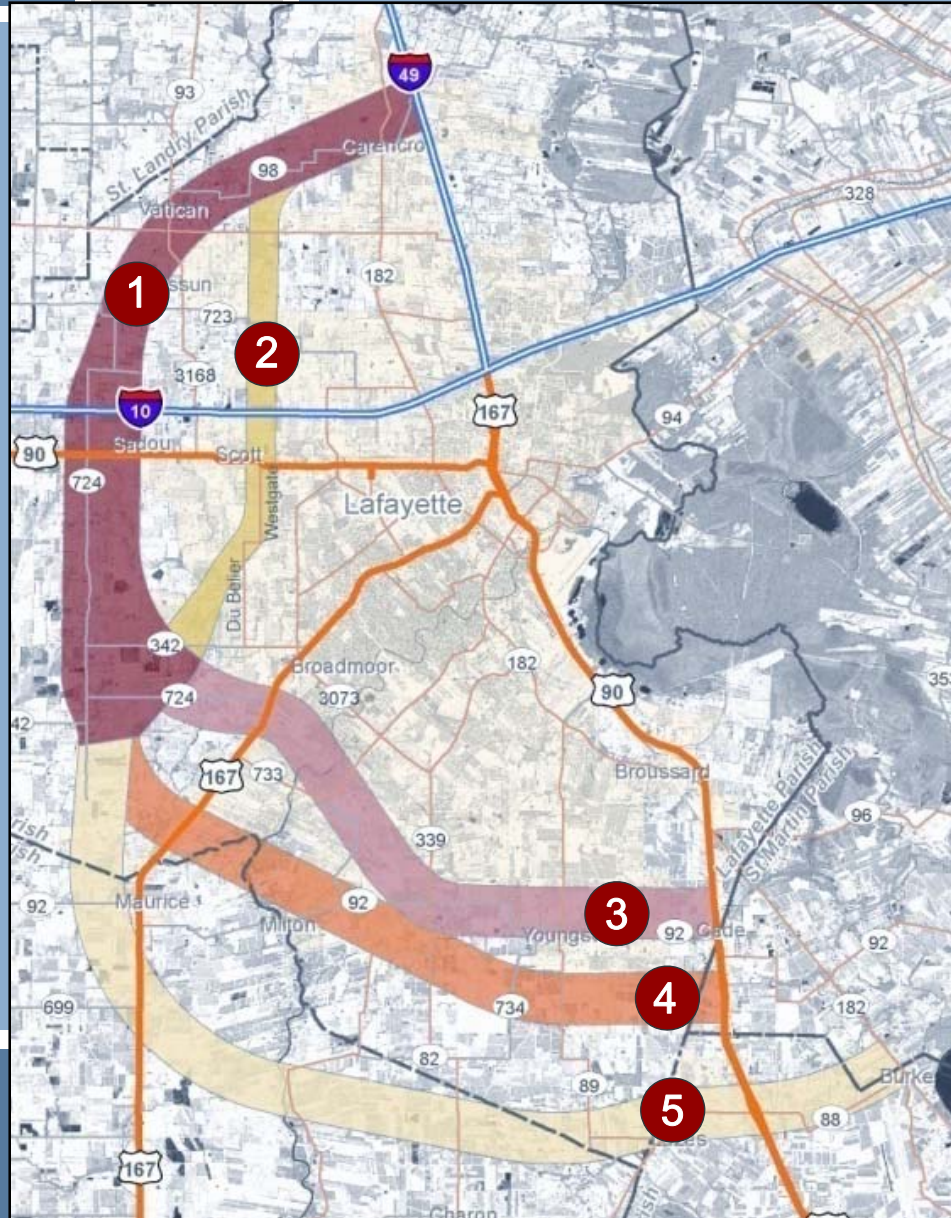
PROPOSED PROJECT

- Controlled-access toll road on new location
- Crosses Lafayette, Iberia, St. Martin and Vermilion parishes
- Connects US 90 south of Lafayette, I-10 west of Lafayette and I-49 north of Lafayette
- Interchanges: US 90, US 167/Johnston St., I-49 and I-10
- Lead Agencies: LMEC, FHWA, LADOTD
- Cooperating Agencies: US Coast Guard & Army Corps of Engineers

PURPOSE AND NEED

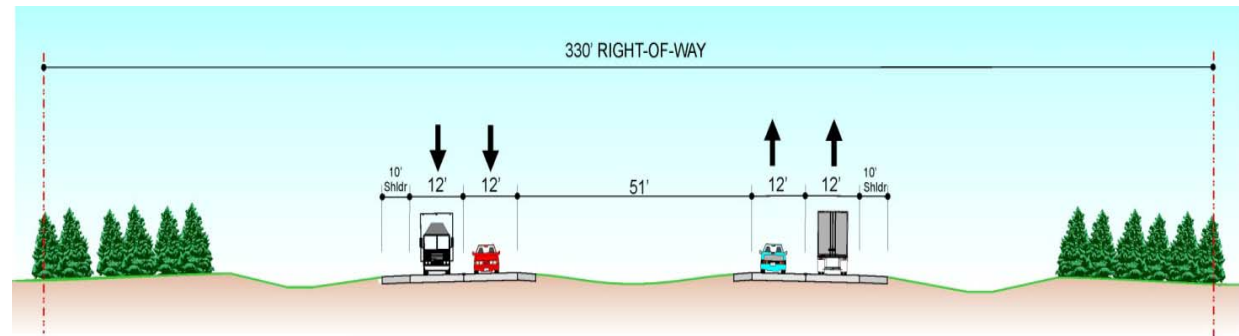
- Purpose
 - Enhance the regional and national transportation system by:
 - Improving system linkage
 - Increasing capacity and accommodating transportation demand
 - Responding to economic development within the greater Lafayette area
- Need
 - Increase roadway capacity
 - Provide north-south mobility

ALTERNATIVES

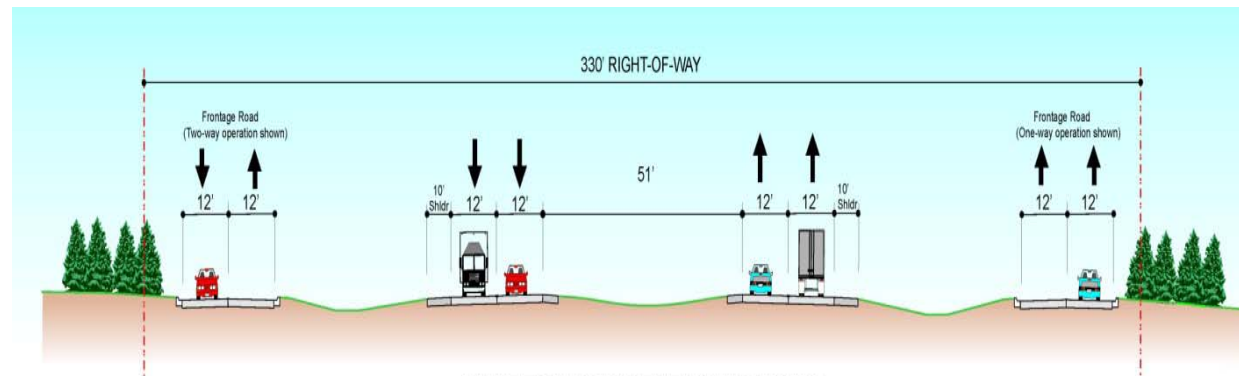


- No-Build
- North Corridors
 - 1. Common 1
 - 2. Common 2
- South Corridors
 - 3. Inner
 - 4. Middle
 - 5. Outer

TYPICAL SECTIONS



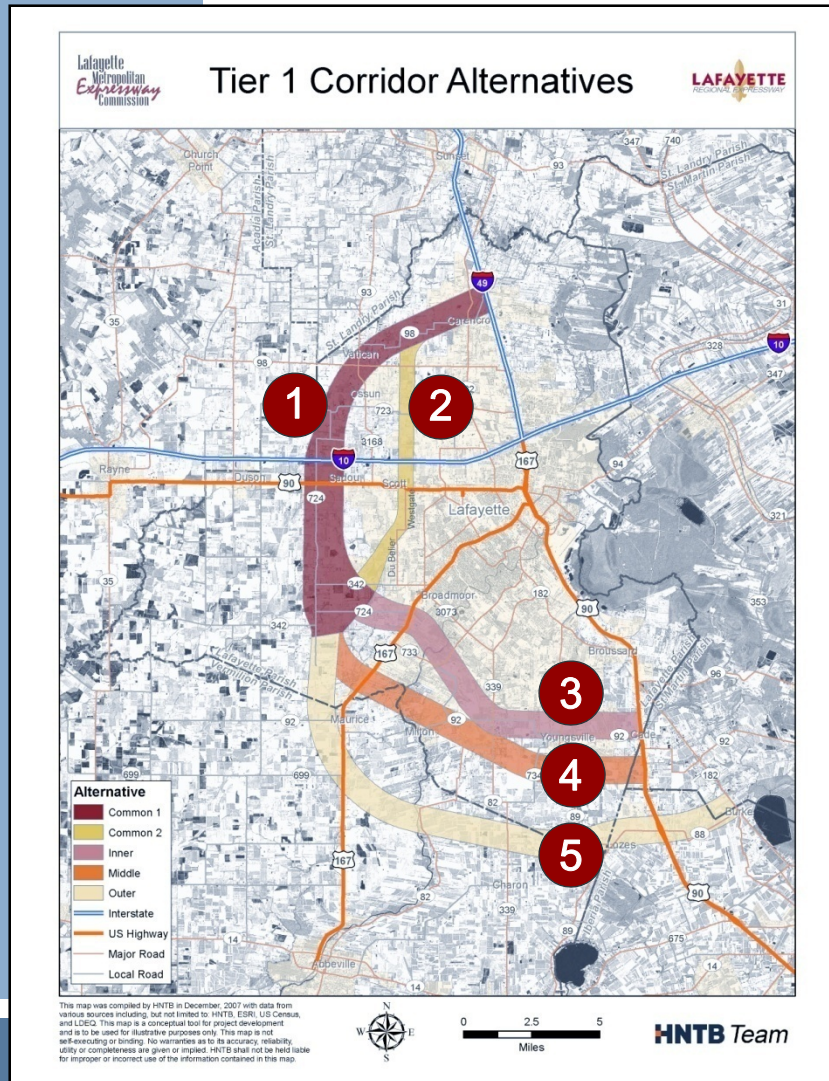
4-LANE TOLL ROAD



4-LANE TOLL ROAD WITH FRONTAGE ROADS

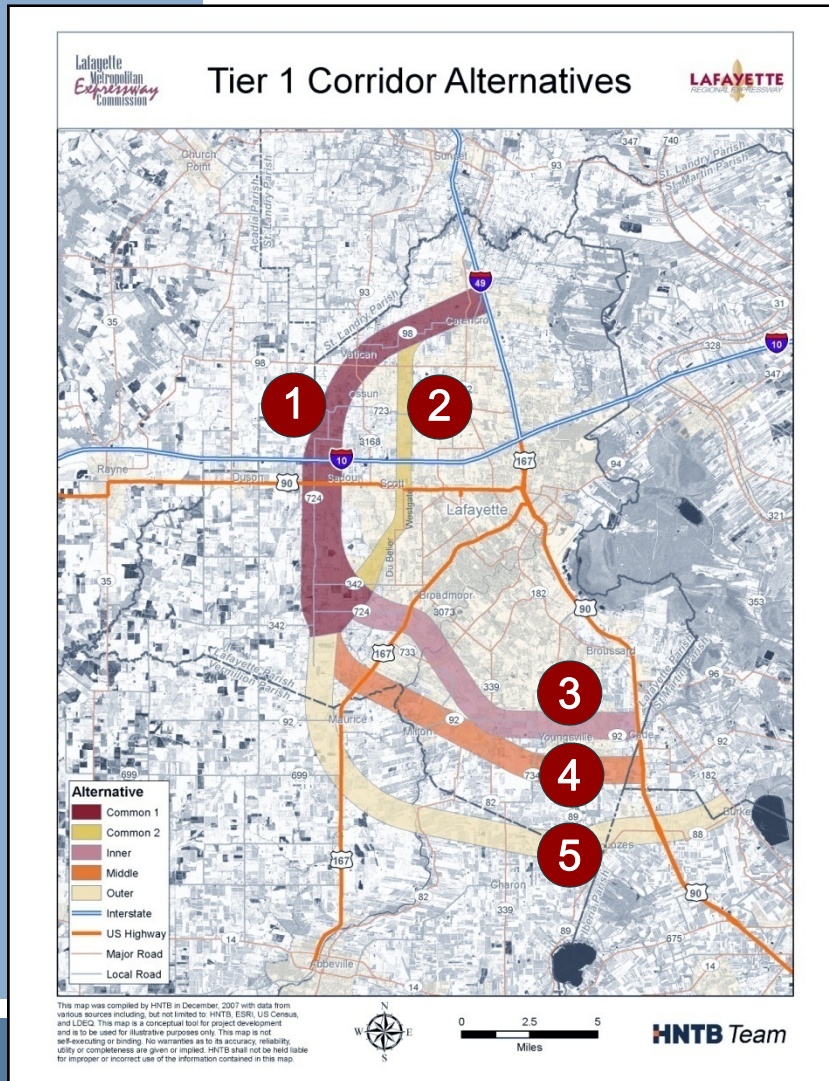
Typical sections
median allows for additional future lanes

PRELIMINARY COSTS (\$2009)



- North Corridors
 1. Common 1
(\$399M-\$604M, 15.1 miles)
 2. Common 2
(\$411M-\$613M, 14.2 miles)
- South Corridors
 3. Inner
(\$589M-\$678M, 12.7 miles)
 4. Middle
(\$565M-\$655M, 14.2 miles)
 5. Outer
(\$620M-\$651M, 20.8 miles)

Pre-DEIS (2010) PREFERRED CORRIDOR



- North Corridors
 - 1. Common 1
 - 2. Common 2
- South Corridors
 - 3. Inner
 - 4. Middle
 - 5. Outer

WHERE WERE WE?

- Purpose and Need / Scoping (2006 / 2007)
- Logical Termini (2006)
- Corridor Alternatives (2010)
- Engineering Factors
 - Design Criteria (2009)
 - Construction Costs (2009)
 - O&M (2009)
 - Traffic & Revenue (2010)
 - Finance and Delivery Plan (2010)
- Interchange Location Study (2011)



Key Notes

2005: Feasibility Study

2006: Transportation Mobility Fund and P3 Legislation (Act No. 306)

2012: LRX EIS Placed on Hold

2014: LMEC Moves to Reactivate EIS

Activity/Deliverable	Year									
	2005	2006	2007	2008	2009	2010	2011	2012	2013	2014
Implementation Plan	May-05									
Notice of Intent Issued for Tier 1 EIS	Dec-05									
Solicitation of Views with Scoping	Dec-05									
Solicitation of Views without Scoping	Dec-05									
Agency Scoping Meeting Invitation		Jan-06								
FHWA Approved Logical Terminal		Jan-06								
Final Agency Involvement Plan		Feb-06								
Final Public Involvement Plan		Feb-06								
Tier 1 Status Report		Aug-06								
Purpose and Need			Apr-07							
Newsletter				Feb-08						
Civic Advisory Public Meeting				Feb-08						
IRC Post Katrina PoP Employment				Feb-08						
Revised Phase 1A Report				Feb-08						
Pre-Draft EIS				Feb-08						
Stakeholder Group Meeting Presentation				Feb-08						
Public Meeting Press Release				Mar-08						
Traffic and Revenue Memo				Apr-08						
Pre-Draft EIS Volume 1				Dec-08						
Pre-Draft EIS Volume 2				Dec-08						
Amended Notice of Intent					Oct-09					
Level 2 Traffic and Revenue						Mar-10				
Revised Interchange Spacing Study						Jul-10				
Pre-Draft EIS Comments and Responses						Jul-10				
MPO TPC Meeting						Jul-10				
Revised Pre-Draft EIS Volume 1						Jul-10				
Revised Pre-Draft EIS Volume 2						Jul-10				
Finalized Financing and Delivery Plan						Dec-10				
Traffic and Revenue for Scenarios 7 & 8							May-11			
Interchange Spacing Study							Jun-11			
Probability Assessment for Scenarios 7 & 8							Jul-11			
Financing and Delivery Plan Addendum							Oct-11			
DOTD Briefing							Dec-11			
Mega Project Questionnaire									May-13	
Mega Projects Presentation									Jul-13	
Newsletter									Jul-13	
LMEC/FHWA/DOTD Meeting on Potential EIS Reactivation										Dec-14

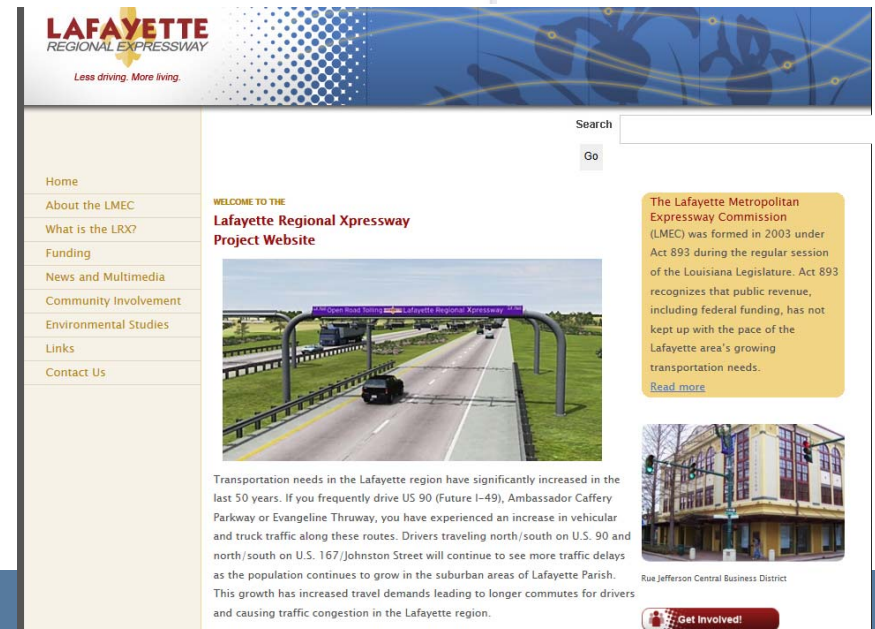
ENVIRONMENTAL RESOURCE STATUS

- Environmental Resources / Issues
 - Cultural Resources (2008)
 - Land Use (2006)
 - Social & Economical (2000, 2009)
 - Relocation/Displacements (2006)
 - Air Quality (2004)
 - Noise (no analysis, 2004 guidelines)
 - Prime Farmland Soils (2007)
 - Parks, Recreation, etc. (2006)
 - Public Facilities (2007)
 - Water Quality (2007)
 - T&E, Wildlife, etc. (2007)
 - Waste Sites (2007)
 - Wetland & Waterbodies (2006)
 - Floodplains (1999)
 - Indirect & Cumulative Impacts (2008)

WHAT ARE WE DOING NOW?

- Notify Agencies of Tier 1 EIS Restart
- Agency Meetings
- Public Meetings (2 locations)
- Update Traffic study
- Update pre-draft Tier 1 EIS with current available data, i.e. land use, census, traffic, etc.
- Include additional environmental items not included previously, i.e. children's health & greenhouse gases.
- Re-evaluate interchange location study submitted in 2011 to FHWA; coordination with DOTD & FHWA

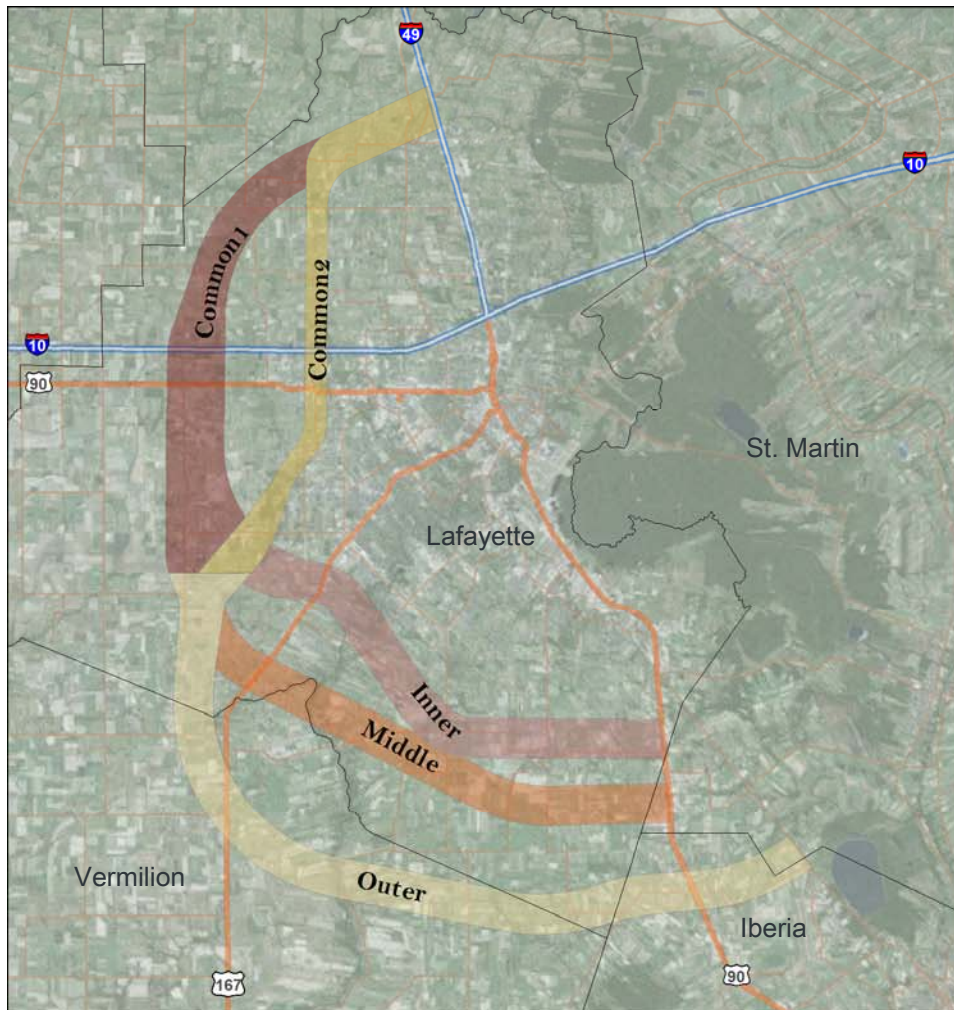
SOCIAL MEDIA



ENVIRONMENTAL RESOURCES

- Cultural Resources (2008) ✓
- Land Use (2006) ✓
- Social & Economical (2000, 2009)
- Relocation/Displacements (2006)
- Air Quality (2004)
- Noise (no analysis, 2004 guidelines)
- Prime Farmland Soils (2007)
- Parks, Recreation, etc. (2006) ✓
- Public Facilities (2007) ✓
- Water Quality (2007) ✓
- T&E, Wildlife, etc. (2007)
- Waste Sites (2007) ✓
- Wetland & Waterbodies (2006) ✓
- Floodplains (1999) ✓
- Indirect & Cumulative Impacts (2008) ✓

CORRIDOR ALTERNATIVES



LRX Alternatives

- Common 1 (2010 Preferred)
- Common 2
- Inner
- Middle
- Outer (2010 Preferred)
- Parish Boundaries

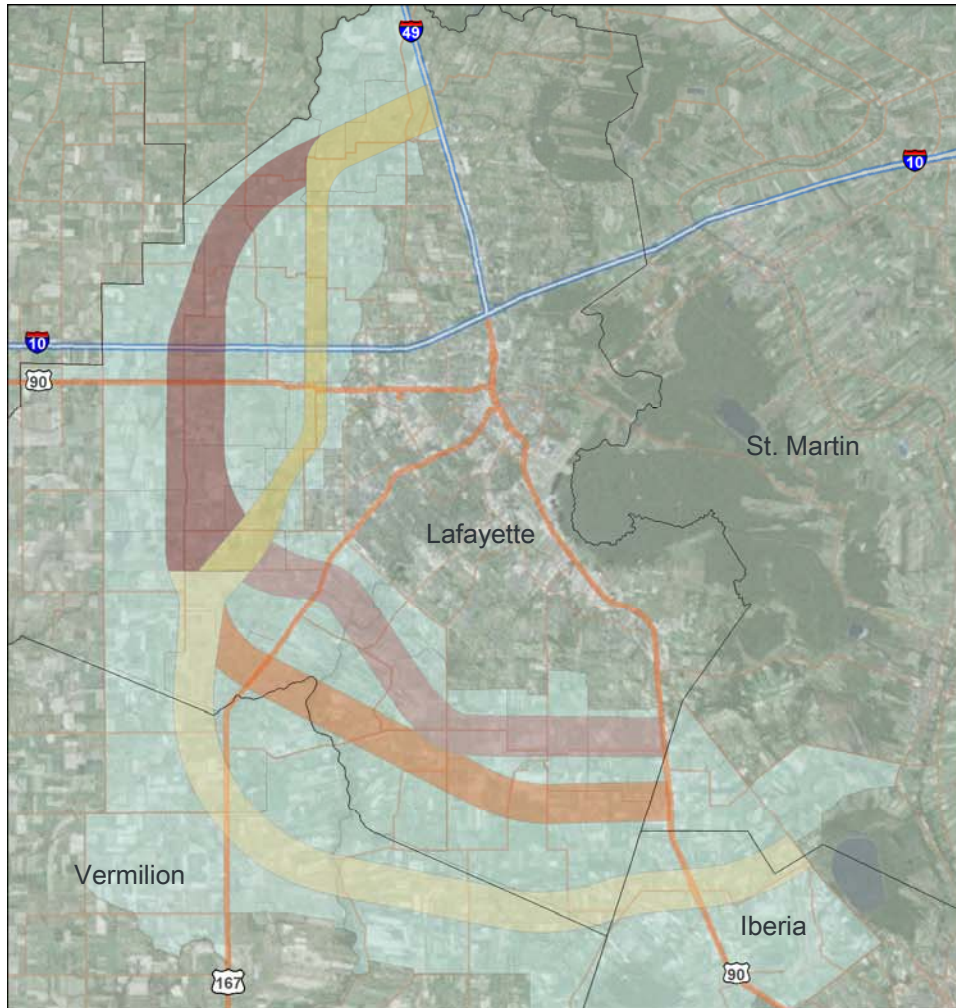
POPULATION

LRX Alternatives

- Common 1 (2010 Preferred)
- Common 2
- Inner
- Middle
- Outer (2010 Preferred)
- Parish Boundaries

Population

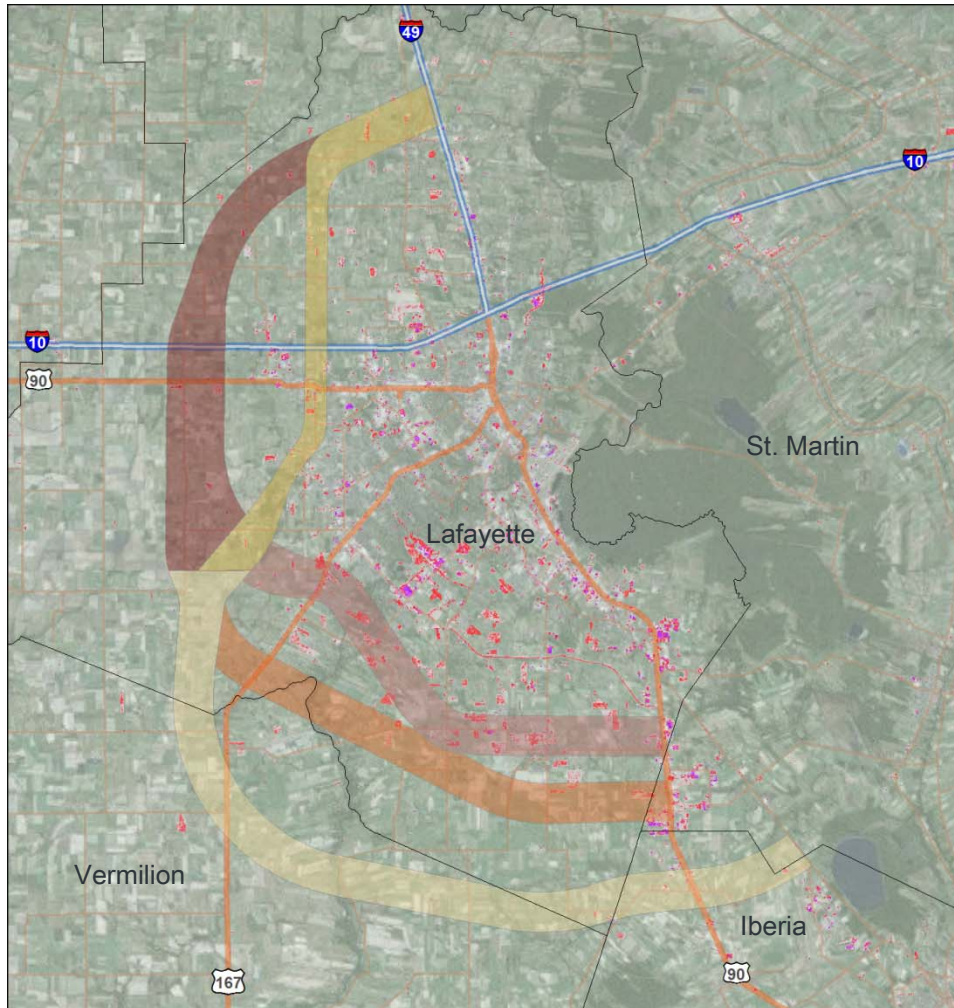
- Census Block Groups



Parish-wide Population Change

	Iberia	Lafayette	St. Martin	Vermilion	Totals
Change 1990-2010	4,943	56,816	8,182	7,944	58,870
% Change 1990-2010	7.2%	34.5%	18.6%	15.9%	23.1%

LAND COVER



LRX Alternatives

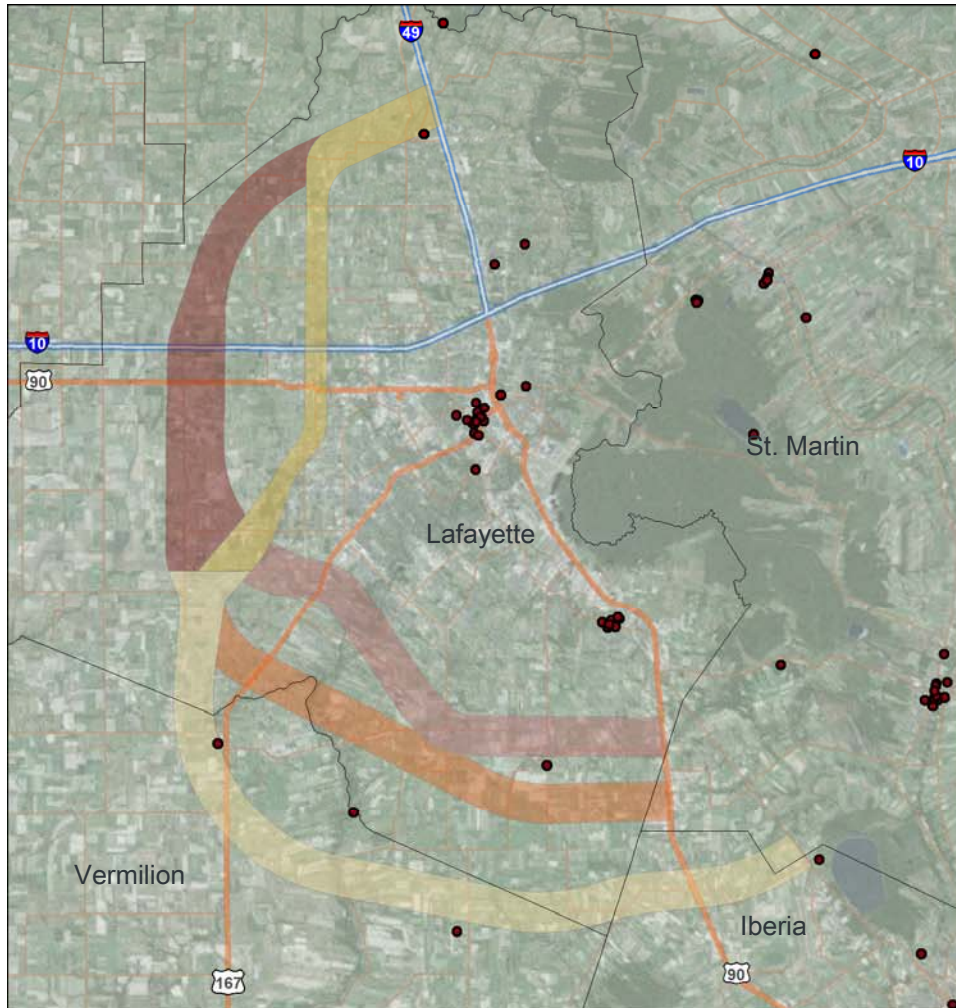
- Common 1 (2010 Preferred)
- Common 2
- Inner
- Middle
- Outer (2010 Preferred)
- Parish Boundaries

Locations Where Impervious Cover Changed from 2001 to 2011

Value

- High : 100%
- Low : 1%

HISTORIC PLACES



LRX Alternatives

- Common 1 (2010 Preferred)
- Common 2
- Inner
- Middle
- Outer (2010 Preferred)
- Parish Boundaries

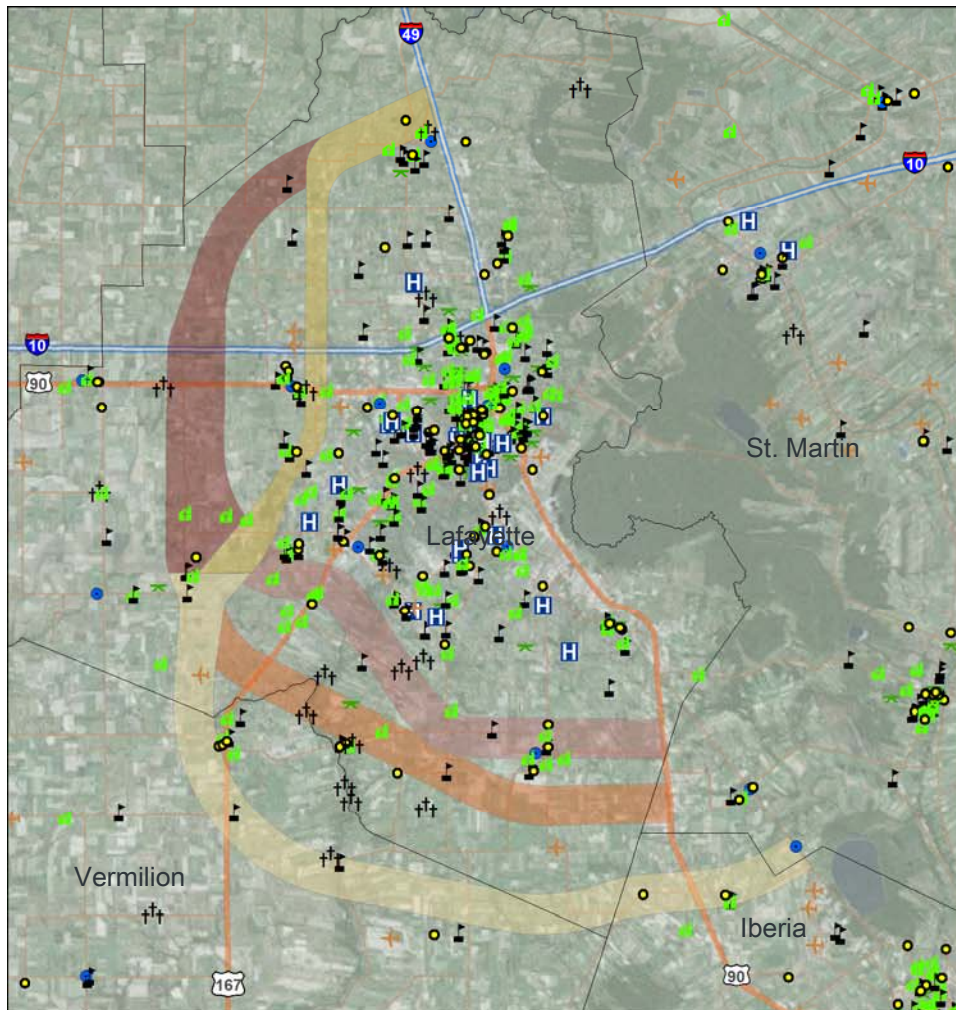
Historic Places

- National Registry of Historic Places

Three historic places

Thirteen archaeologically significant sites (not shown).

COMMUNITY FACILITIES



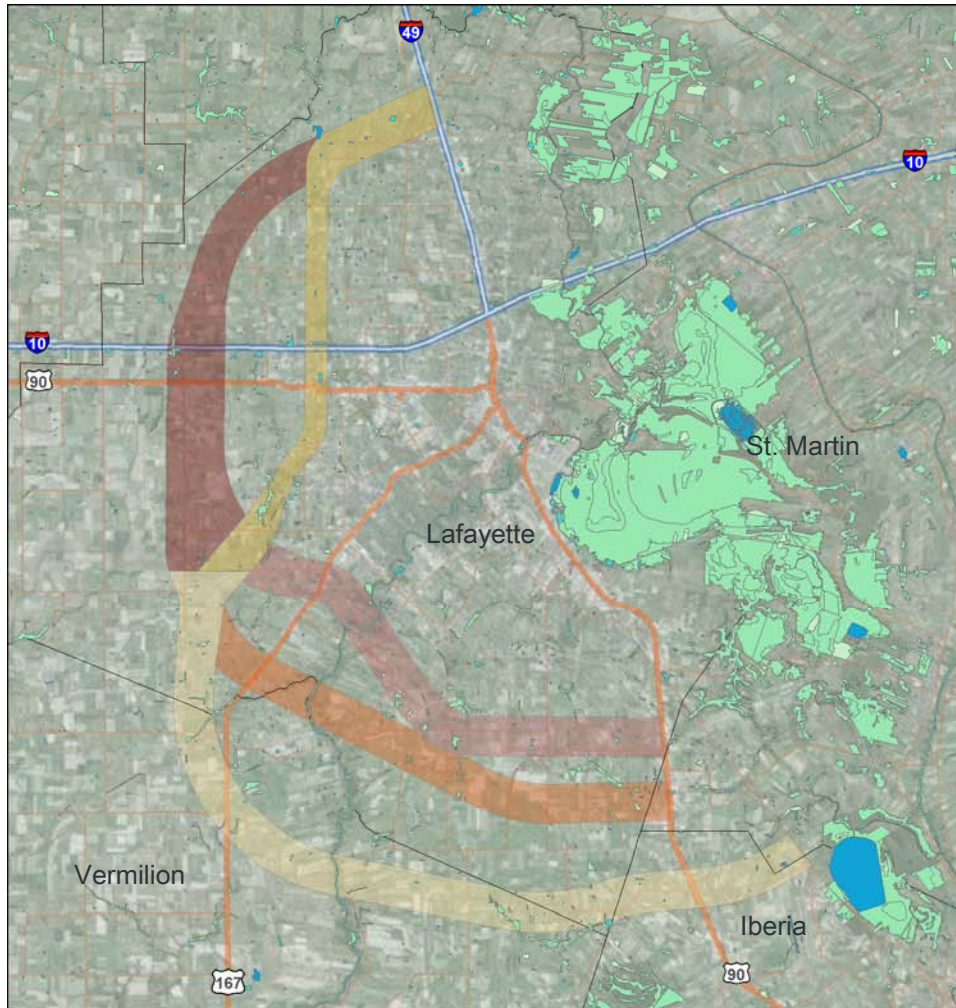
LRX Alternatives

- Common 1 (2010 Preferred)
- Common 2
- Inner
- Middle
- Outer (2010 Preferred)
- Parish Boundaries

Community Facilities

- | | |
|--|---|
| ✦ Airport | ● Post Office |
| ✦✦ Cemetery | ▤ School |
| ✦ Church | ● Police, Fire, Library, & Other Public Buildings |
| H Hospital | |
| ✦ Park | |

WETLANDS



LRX Alternatives

- Common 1 (2010 Preferred)
- Common 2
- Inner
- Middle
- Outer (2010 Preferred)
- Parish Boundaries

Wetlands

- Freshwater Emergent Wetland
- Freshwater Forested/Shrub Wetland
- Riverine
- Freshwater Pond
- Lake

WETLANDS

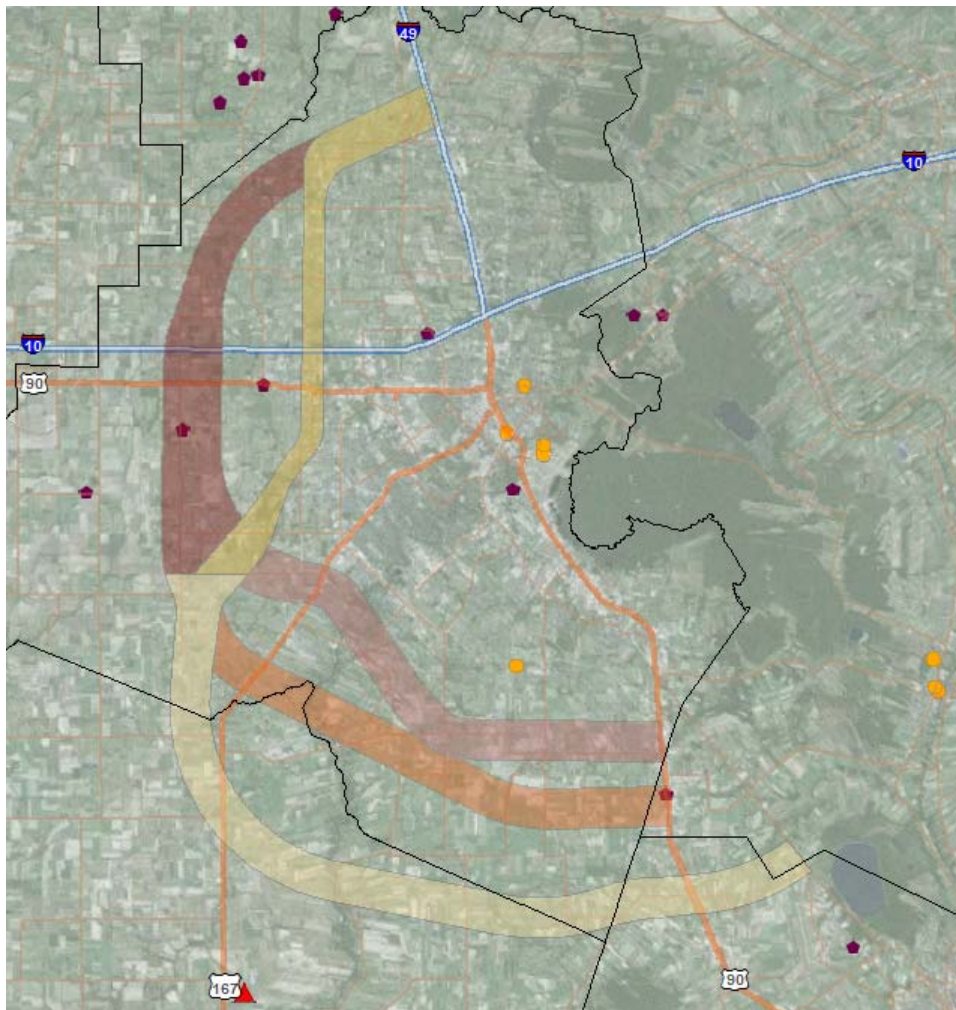
Wetland Type (in acres and Percent of Corridor)	Common 1	Common 2	Inner	Middle	Outer
Total Corridor Acreage	12,271	6,443	7,844	9,357	14,031
Freshwater Emergent Wetland	6.9 (0.06%)	8.9 (0.14%)	16.1 (0.21%)	21.4 (0.23%)	23.3 (0.17%)
Freshwater Forested/Shrub Wetland	47.1 (0.38%)	75.8 (1.18%)	108 (1.38%)	44.5 (0.48%)	154.3 (1.1%)
Freshwater Pond	47.3 (0.39%)	44.4 (0.69%)	14.6 (0.19%)	16.2 (0.17%)	32.2 (0.23%)
Lake	4.7 (0.04%)	1.2 (0.02%)	(0%)	(0%)	(0%)
Riverine	(0%)	(0%)	30.4 (0.39%)	22.4 (0.24%)	27 (0.19%)
Other	4.5 (0.04%)	3.3 (0.05%)	(0%)	(0%)	(0%)
Grand Total	110.5	133.5	169.1	104.5	236.9

Threatened & Endangered Species

State, Federal, and Global Status for Threatened, Endangered, and Restricted Harvest Species in Louisiana by Parish

	State Status	Federal Status	State Rank	Global Rank
Iberia				
Alligator Snapping Turtle	RH		S3	G3G4
Bald Eagle	E	Delisted	S3	G5
Louisiana Black Bear	T	T	S3	G5T2
Pallid Sturgeon	E	E	S1	G2
Lafayette				
Alligator Snapping Turtle	RH		S3	G3G4
St. Martin				
Bald Eagle	E	Delisted	S3	G5
Louisiana Black Bear	T	T	S3	G5T2
Pallid Sturgeon	E	E	S1	G2
Vermilion				
Alligator Snapping Turtle	RH		S3	G3G4
Bald Eagle	E	Delisted	S3	G5
Diamondback Terrapin	RH		S3	G4
Louisiana Black Bear	T	T	S3	G5T2
Piping Plover	T/E	T	S2N	G3

EPA Cleanup Sites



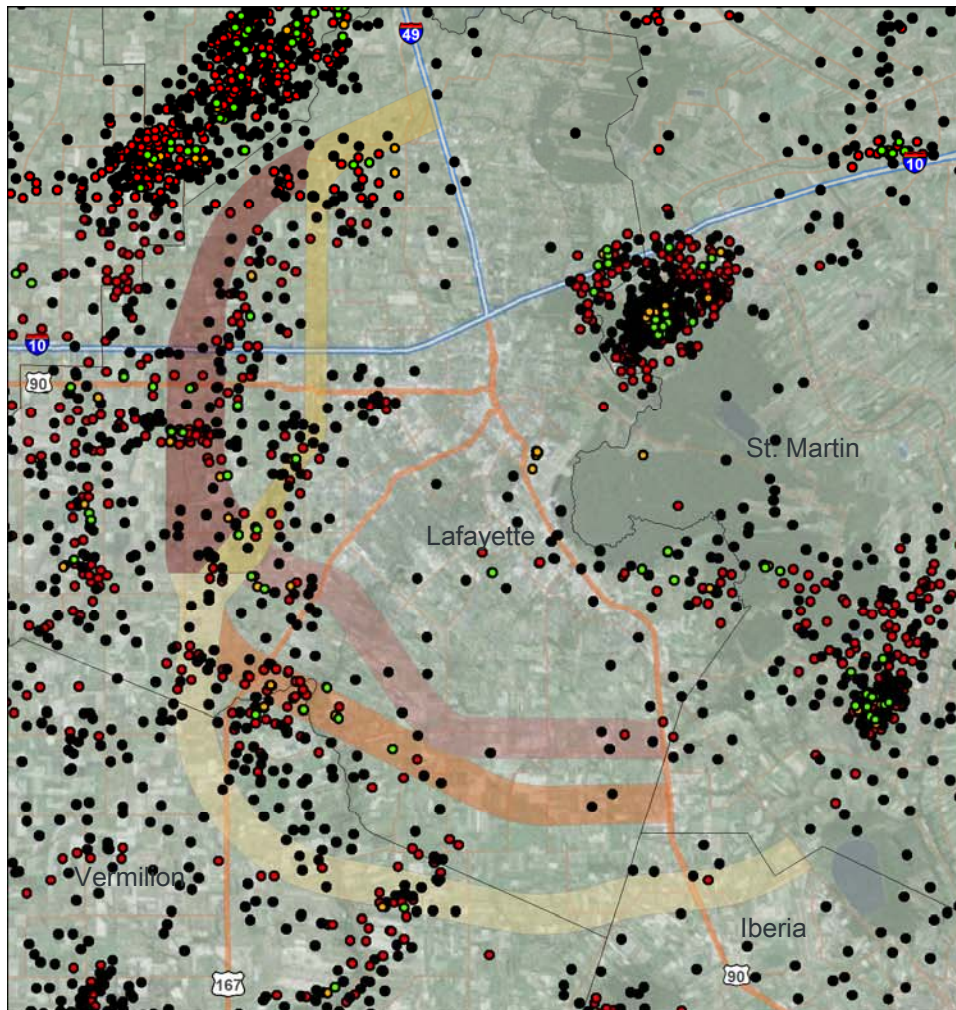
LRX Alternatives

- Common 1 (2010 Preferred)
- Common 2
- Inner
- Middle
- Outer (2010 Preferred)
- Parish Boundaries

EPA Cleanups in My Community

- Incidents of National Significance
- Federal Facilities Docket
- Brownfields Properties
- RCRA and BRAC Federal Facility (RCRA Site)
- Federal Facility (RCRA Site)
- RCRA Hazardous Waste - Corrective Actions
- Superfund and BRAC Federal Facility (Superfund Site)
- Federal Facility (Superfund Site)
- Superfund NPL Sites
- Responses

OIL & GAS WELLS



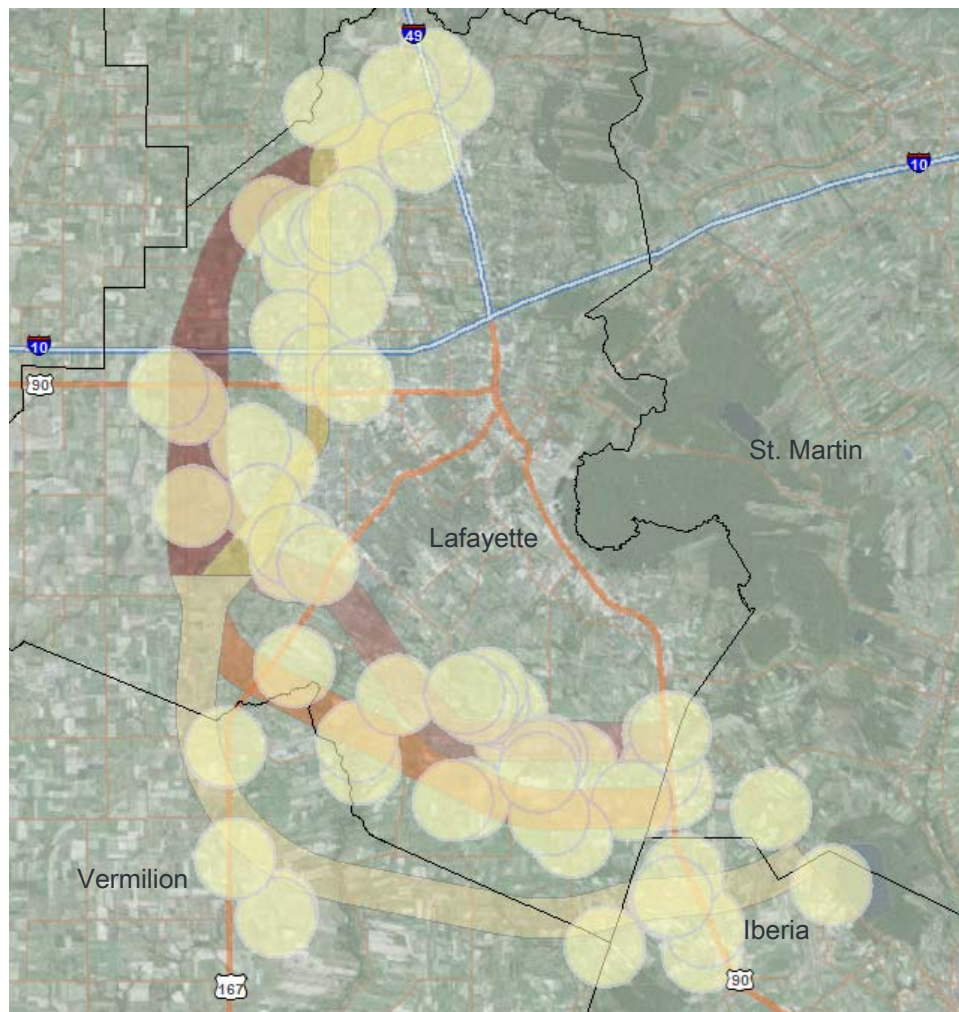
LRX Alternatives

- Common 1 (2010 Preferred)
- Common 2
- Inner
- Middle
- Outer (2010 Preferred)
- Parish Boundaries

Oil & Gas Wells

- Active Producing (27)
- Active Injection (11)
- Dry and Plugged (118)
- Plugged and Abandoned (96)

Groundwater Protection



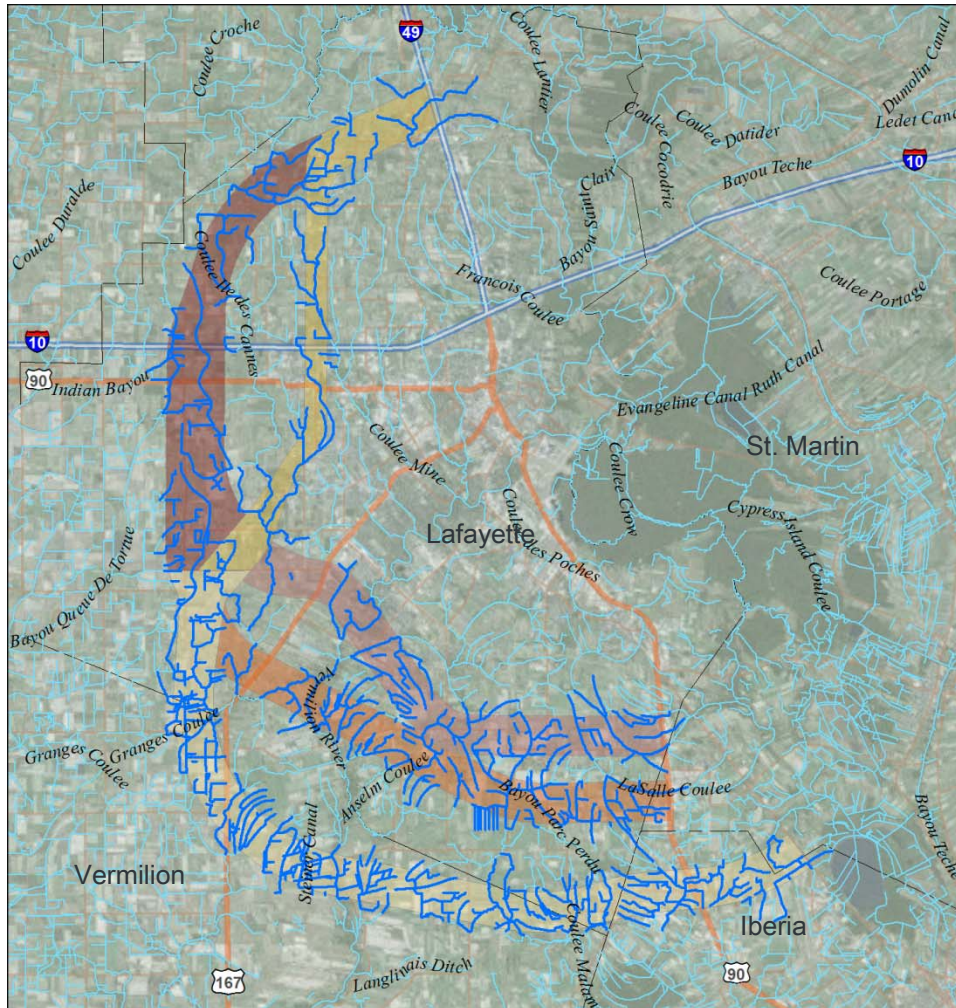
LRX Alternatives

- Common 1 (2010 Preferred)
- Common 2
- Inner
- Middle
- Outer (2010 Preferred)
- Parish Boundaries

Wellhead Protection Areas

- Protected Areas Around Public Water Supplies

RIVERS & STREAMS



LRX Alternatives

- Common 1 (2010 Preferred)
- Common 2
- Inner
- Middle
- Outer (2010 Preferred)
- Parish Boundaries

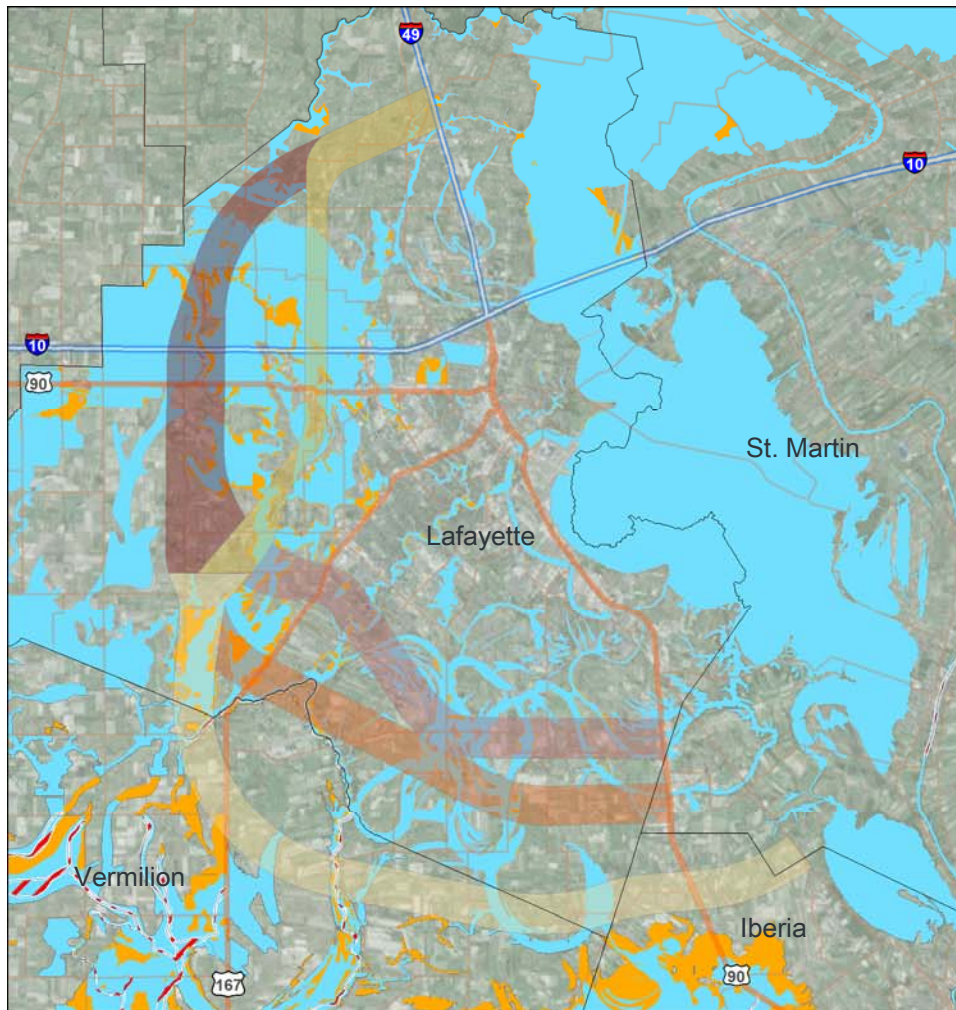
Hydrography

- Rivers & Streams
- Rivers & Streams within the LRX Corridors

Vermilion River
Anselm Coulee
Bayou Parc Perdu
Bayou Queue De Tortue
Coulee Ile des Cannes
Coulee Kenny

Coulee Mine
Granges Coulee
Indian Bayou
LaSalle Coulee
LeBlanc Ditch
Steiner Canal

FLOOD HAZARDS



LRX Alternatives

- Common 1 (2010 Preferred)
- Common 2
- Inner
- Middle
- Outer (2010 Preferred)
- Parish Boundaries

Flood Hazards

FEMA Q3 FIRM

- 0.2 PCT ANNUAL CHANCE FLOOD HAZARD
- A; AE; AH
- X

Tier 1 EIS – NEXT STEPS

- Pre-Draft review by Agencies
- Agency/Public Meetings – June 2016
- Submit Draft Tier 1 EIS to FHWA / DOTD requesting approval to publish from FHWA
- Notify public of availability of draft Tier 1 EIS and Public Hearing date
- Conduct Public Hearing (2 locations) – Sept 2016
- Public comment period
- Address comments and incorporate changes into the Tier 1 Final EIS document
- Draft FEIS/Record of Decision (ROD) – December 2016
- Submit Tier 1 Final EIS / ROD to FHWA / DOTD for approval

Tier 2 EIS..... FUTURE

- Detailed examination of impacts
- Alternative alignments within the selected corridor
- Interchange Justification Report
- Updated Traffic and Revenue
- Detailed facility design
- Right-of-way requirements
- Context Sensitive Solutions
- Avoidance, minimization, mitigation
- Environmental clearance and commitments
- Tier 2 ROD



Questions and Comments

Project Contact information:

Kate B. Prejean, HNTB Corporation, kbprejean@hntb.com, 225-368-2800